



\$795,380

ONE PART CONTRACT. BUILD NOW, PAY LATER, FINANCE AVAILABLE.

- 4 beds
- 2 baths

## Package Information

**Date added:** Added 7 months ago

**Structure:** ONE PART CONTRACT

**Total M2:** 392 M2

**Bathrooms:** 2 baths

**Living:** 2

**Builder:** LX

**Title date:** CONSTRUCTION COMPLETE

**Bedrooms:** 4 beds

**Garage:** 2

**House Size:** 193.74 M2

## Floor Plans



  
4

  
2

  
2

  
2

House Dimensions

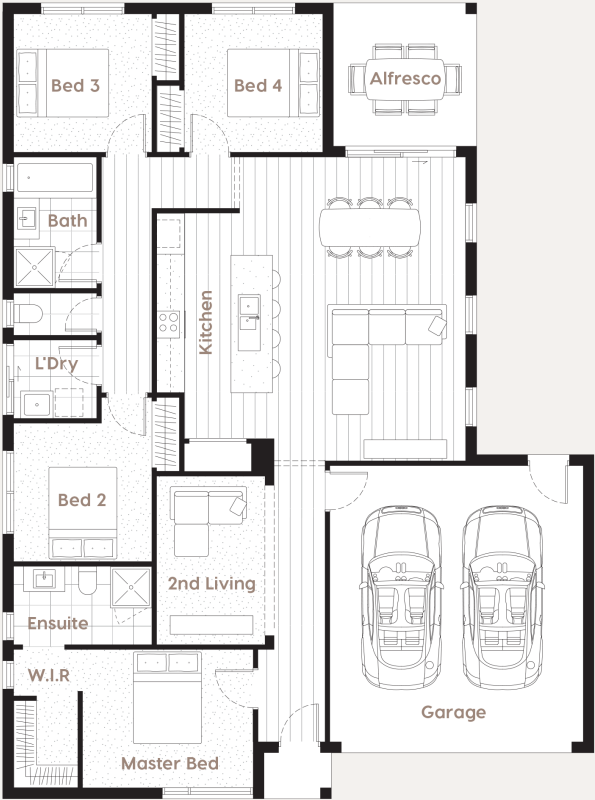
12.85m x 17.3m

Designed to fit\* at least

14m width x 25m length

House Specifications

Living Area	144.3m²	15.53sq	1553ft²
Garage	36m²	3.88sq	388ft²
Porch	1.5m²	0.16sq	16ft²
Alfresco	9.7m²	1.04sq	104ft²
Total	191.5m²	20.61sq	2061ft²



House Specifications

Kitchen	3.9 x 2.5m	Bedroom 4	3.0 x 3.0m	Laundry	1.8 x 1.7m
Master Bedroom	3.7 x 3.0m	Ensuite	3.0 x 1.7m	2nd Living	2.46 x 3.66m
Bedroom 2	3.0 x 3.0m	Bathroom	2.85 x 1.8m	Alfresco	3.11 x 3.11m
Bedroom 3	3.0 x 3.0m	Walk In Robe	1.39 x 3.0m	Garage	5.5 x 6.0m

\*Subject to council and developer requirements and guidelines

