



ONE PART CONTRACT. BUILD NOW, PAY LATER, FINANCE AVAILABLE.

- 4 beds
- 2 baths

Package Information

Date added: Added 7 months ago

Structure: ONE PART CONTRACT

Total M2: 371 M2

Bathrooms: 2 baths

Living: 1

Builder: LX

Title date: JULY 25

Bedrooms: 4 beds

Garage: 2

House Size: 161.54 M2

Floor Plans




4


1


2


2

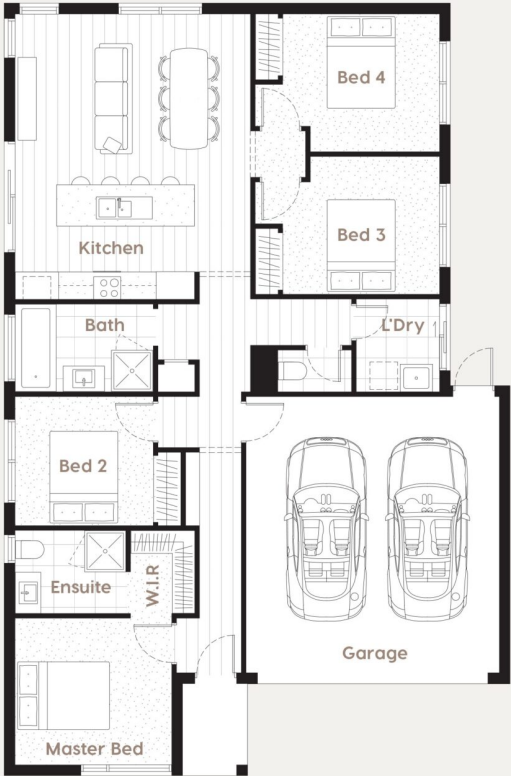
House Dimensions

11m x 16.8m

Designed to fit* at least
14m width x 21m length

House Specifications

Living Area	123.7m²	13.31sq	1331ft²
Garage	36m²	3.88sq	388ft²
Porch	2.8m²	0.30sq	30ft²
Total	162.5m²	17.49sq	1749ft²



House Specifications

Kitchen	3.9 x 2.5m	Bedroom 4	3.4 x 2.99m	Walk In Robe	1.39 x 1.8m
Master Bedroom	3.4 x 3.18m	Ensuite	2.4 x 1.8m	Laundry	1.8 x 2.01m
Bedroom 2	3.0 x 2.8m	Bathroom	3.0 x 1.9m	Garage	5.5 x 6.0m
Bedroom 3	3.4 x 2.99m				

