



ONE PART CONTRACT. BUILD NOW, PAY LATER, FINANCE AVAILABLE.

- 3 beds
- 2 baths

Package Information

Date added: Added 6 months ago

Structure: ONE PART CONTRACT

Total M2: 313 M2

Bathrooms: 2 baths

Living: 1

Builder: LX

Title date: Q3 2025

Bedrooms: 3 beds

Garage: 2

House Size: 162 M2

Floor Plans



Province

17



3



1



2



2

House Dimensions

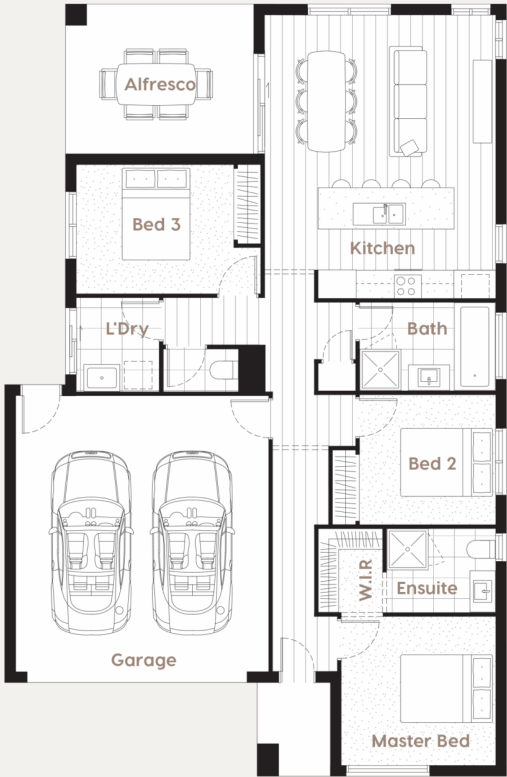
10.9m x 16.8m

Designed to fit* at least

12.5m width x 21m length

House Specifications

Living Area	108.36m ²	11.66sq	1166ft ²
Garage	36m ²	3.88sq	388ft ²
Porch	3.24m ²	0.35sq	35ft ²
Alfresco	13.37m ²	1.44sq	144ft ²
Total	161.04m ²	17.33sq	1733ft ²



House Specifications

Kitchen	3.85 x 2.5m	Ensuite	2.36 x 1.82m	Laundry	1.8 x 2.04m
Master Bedroom	3.83 x 3.23m	Bathroom	2.95 x 1.92m	Alfresco	4.1 x 3.26m
Bedroom 2	2.95 x 2.82m	Walk In Robe	1.4 x 1.82m	Garage	5.5 x 6.0m
Bedroom 3	3.42 x 2.8m				

